



FOR SALE
COCKBURN
MOTTINGHAM
020 8857 8857
www.cockburn-online.co.uk

COCKBURN
ESTATE AND LETTINGS AGENTS

cockburn-online.co.uk

Bilsby Grove, Mottingham, SE9

Guide Price £425,000

🛏️ 3 🚿 1 🚪 1

- Three Bed Terraced House
- Large Reception Room
- Ideal First Time Purchase Or Buy To Let Investment
- Easy Reach Of Grove Park & Mottingham Railway Stations
- Excellent Bus Links Keeping You Connected With Eltham, Bromley & Chislehurst
- Charming Front & Rear Gardens
- Perfect For Growing Families
- EPC Rating E - Potential C
- Council Tax Band C - London Borough Of Bromley



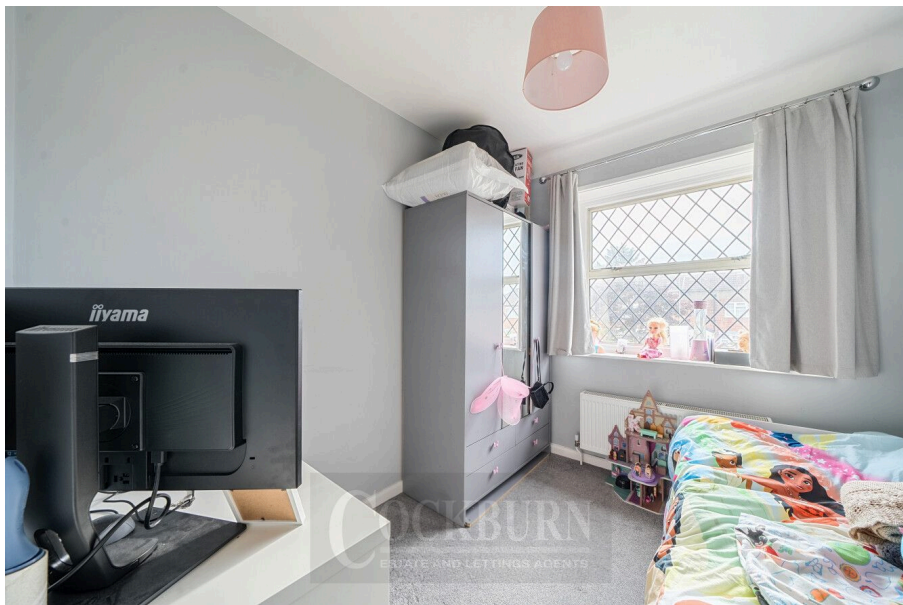
***** GUIDE PRICE £425,000 - £450,000 *****

Charming Three Bedroom Terraced Home in Mottingham, London

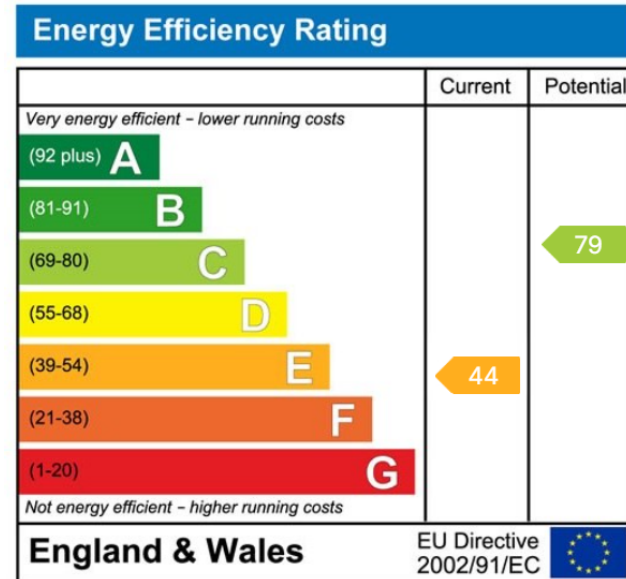
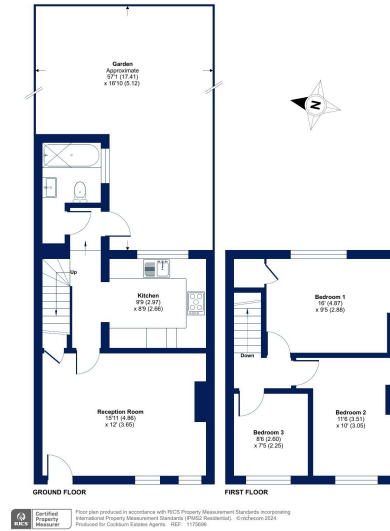
Discover the perfect family home at Bilsby Grove. This wonderful three-bedroom terraced house would be ideal for first time buyers or buy to let investors alike, complete with a spacious reception room, fitted kitchen, three generously sized bedrooms, downstairs family bathroom and well maintained rear garden, all conveniently located in the heart of Mottingham.

Situated close to both Grove Park & Mottingham Railway Stations, commuting to various parts of London is convenient. Local shops are within walking distance, providing easy access to essential amenities. Excellent bus links keep you connected to Chislehurst, Bromley, and Eltham, making this property an excellent choice.





Bilsby Grove, London, SE9
 Approximate Area = 741 sq ft / 68.8 sq m
 For information only - Not to scale



Cockburn EA

352 Footscray Road,
 London, SE9 2EB

t: 020 8859 8590